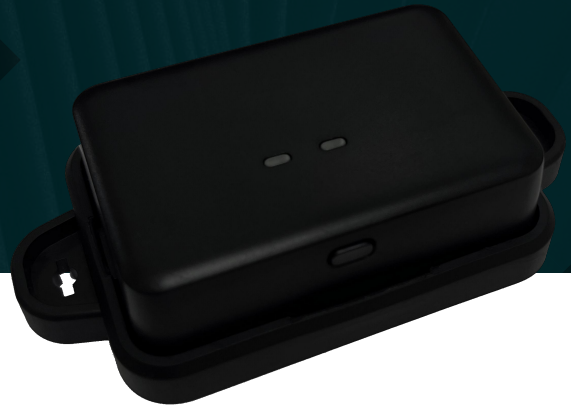


GT-440

UWB Tag - Asset Type



- ✔ IEEE 802.15.4a UWB
- ✔ CR2 Battery
- ✔ Flash Light, Buzzer
- ✔ Easy battery replacement

Specifications

Mechanical & Environmental

Standard	<ul style="list-style-type: none"> • IEEE802.15.4a • BLE 5.0
Size (mm)	67 × 47 × 21 (Without mounting hole)
Weight (g)	38
Power Requirement	CR2 Lithium 3V Battery, Non-chargable
Power Consumption	< 1W (Instant)
Battery Life	<ul style="list-style-type: none"> • ToF: 6+ months@0.1Hz w/ smart sleep • TDoA: 8+ months@0.1Hz w/ smart sleep
Blink Rate	0.1 ~ 20Hz (Adjustable)
LED	LED 1: Green Color LED: <ul style="list-style-type: none"> • Green flash while triggered LED 2: Three Color LED: <ul style="list-style-type: none"> • Red Flicker: Low Power Status • Green Flicker: Normal Power Status
Temperature	<ul style="list-style-type: none"> • Operating: -20°C ~ 60°C • Storage: -30°C ~ 70°C
Humidity	<ul style="list-style-type: none"> • 40°C @ 95% Relative Humidity, Non-condensing
Functions	<ul style="list-style-type: none"> • Smart Rest Mode • Lighting Flash • Buzzer

UWB

Frequency	<ul style="list-style-type: none"> • Low Band: 3.5GHz ~ 6.5GHz (CH2/CH3) • High Band: 6.5GHz ~ 8GHz (CH5/CH9)
Physical Rate	<ul style="list-style-type: none"> • 110 Kbps • 850 Kbps • 6.8 Mbps
Channel Frequency Width	500 MHz
Working Mode	<ul style="list-style-type: none"> • ToF • TDoA

BLE

Frequency	2400MHz ~ 2483.5MHz
Physical Rate	2 Mbps