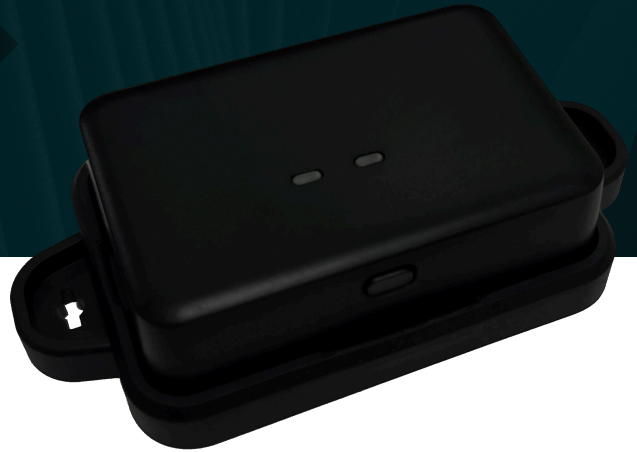


# GT-440

## UWB Tag - Asset Type



- ✔ IEEE 802.15.4a UWB
- ✔ CR2 Battery
- ✔ Flash Light, Buzzer
- ✔ Easy battery replacement

## Specifications

### Mechanical & Environmental

<b>Standard</b>	<ul style="list-style-type: none"> <li>• IEEE802.15.4a</li> <li>• BLE 5.0</li> </ul>
<b>Size (mm)</b>	67 × 47 × 21 (Without mounting hole)
<b>Weight (g)</b>	38
<b>Power Requirement</b>	CR2 Lithium 3V Battery, Non-chargable
<b>Power Consumption</b>	< 1W (Instant)
<b>Battery Life</b>	<ul style="list-style-type: none"> <li>• ToF: 6+ months@0.1Hz w/ smart sleep</li> <li>• TDoA: 8+ months@0.1Hz w/ smart sleep</li> </ul>
<b>Blink Rate</b>	0.1 ~ 20Hz (Adjustable)
<b>LED</b>	LED 1: Green Color LED: <ul style="list-style-type: none"> <li>• Green flash while triggered</li> </ul> LED 2: Three Color LED: <ul style="list-style-type: none"> <li>• Red Flicker: Low Power Status</li> <li>• Green Flicker: Normal Power Status</li> </ul>
<b>Temperature</b>	<ul style="list-style-type: none"> <li>• Operating: -20°C ~ 60°C</li> <li>• Storage: -30°C ~ 70°C</li> </ul>
<b>Humidity</b>	<ul style="list-style-type: none"> <li>• 40°C @ 95% Relative Humidity, Non-condensing</li> </ul>
<b>Functions</b>	<ul style="list-style-type: none"> <li>• Smart Rest Mode</li> <li>• Lighting Flash</li> <li>• Buzzer</li> </ul>

### UWB

<b>Frequency</b>	<ul style="list-style-type: none"> <li>• 4492.8MHz (CH3)</li> </ul>
<b>Physical Rate</b>	<ul style="list-style-type: none"> <li>• 110 Kbps</li> <li>• 850 Kbps</li> <li>• 6.8 Mbps</li> </ul>
<b>Channel Frequency Width</b>	500 MHz
<b>Working Mode</b>	<ul style="list-style-type: none"> <li>• ToF</li> <li>• TDoA</li> </ul>

### BLE

<b>Frequency</b>	2400MHz ~ 2483.5MHz
<b>Physical Rate</b>	2 Mbps